

Desire Elegant

the size of your success
is measured by the strength of
your desire



a project of
DESIRE CONSTRUCTIONS



**Desire
Elegant**

Perfectly placed to be prestigious !

The human desire is to own everything which reflects class, quality & elite society,
A perfect address what you desire is located in heart of Banjara Hills.

Elegance is a result of
appropriateness and attractiveness



City Center



GVK one

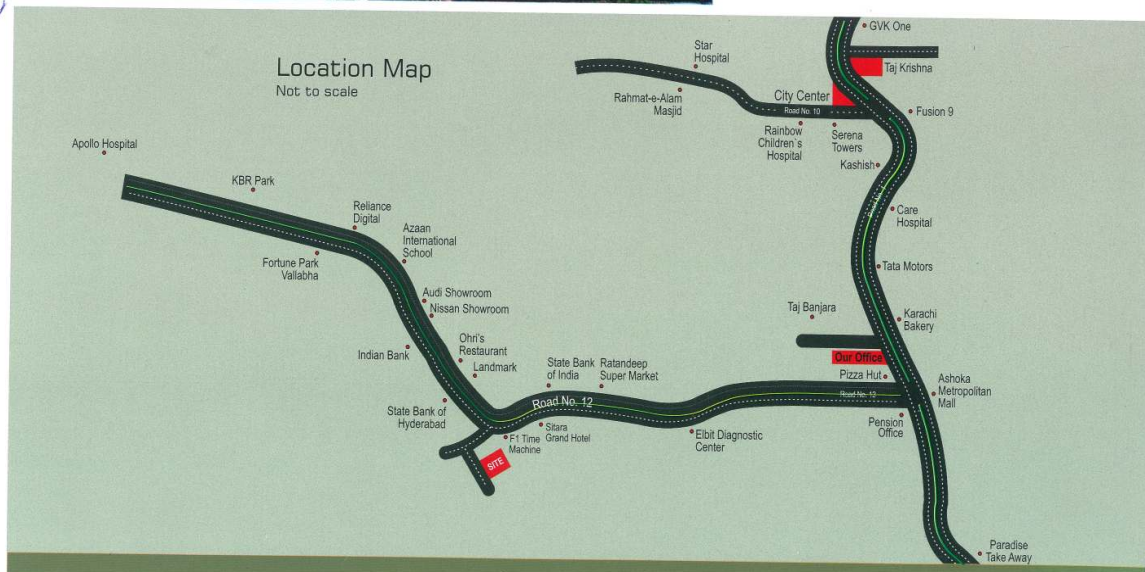


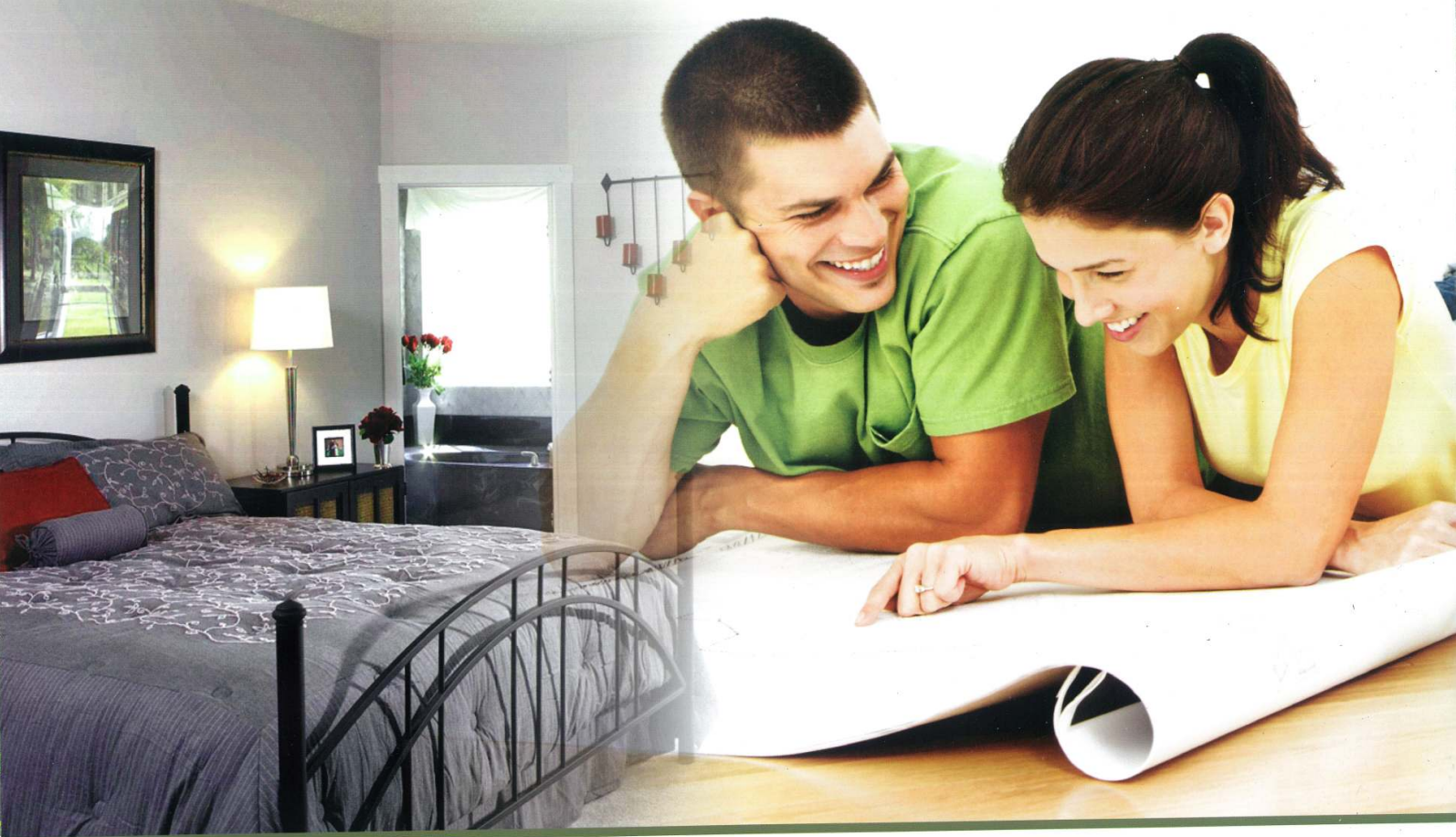
Taj Krishna

- 5 min. drive from City Center
- 5 min. drive from Taj Krishna
- 6 min. drive from GVK one
- 2 min. drive from KBR Park
- 5 min. drive from Apollo Hospitals

Elegance is not harmony or richness alone. It is the clarity and the manner of your choice. Elegance is the language of your rich, inner desire. And choice cannot be absolutely good without being elegant. Elegance is one of the principal components of harmony. Even if elegance always appears to be easy, it is nevertheless true that not everything that has a simple and natural appearance is elegant.

Imbibe a bit of elegance within you and be termed classy and graceful. Desire's Elegant is a testament of all that can be termed exquisite, ethereal, enigmatic and sensual. It is just the right place to indulge in conjuring up beautiful dreams. Yes, and it is 'the' place to live those dreams as well. Can elegant get more desirable than this?





**Desire
Elegant**

Be devoted to elegant pursuits...

Your desire to look elegant will make you act with grace and cultivate fine taste.
And your praise will be admirably succinct.

When elegance seeps into the core of your existence, a sense of defining confidence envelopes the being leading to an outward reflection of warmth, strength, beauty, intelligence and greatness.

Desire
Elegant



KBR Park



Apollo Health City



Society Park

- Excellent Location
- Tot-lot for Children
- No Common Wall
- Aesthetically done parking area
- 200 ft away from Colony Park

Desire's Elegant is an epitome of luxury infused within an intelligently defined structure which is 200 feet away from 6500 Sq. Yds. Park in Colony Layout.

Desire Constructions has allowed itself to be termed a builder who is unable to construct anything which is cold, concrete and heartless. And that has been its biggest compliment. Its numerous works of art in concrete are singing a song of quality, elegance, planning and perfect execution.

They draw on the huge experience collected over years of dedicated building activity. It is based on perfect and timely execution of projects. These endearing qualities have enabled them to get heartwarming praise from their

customers as well as a swelling of their trust bank.

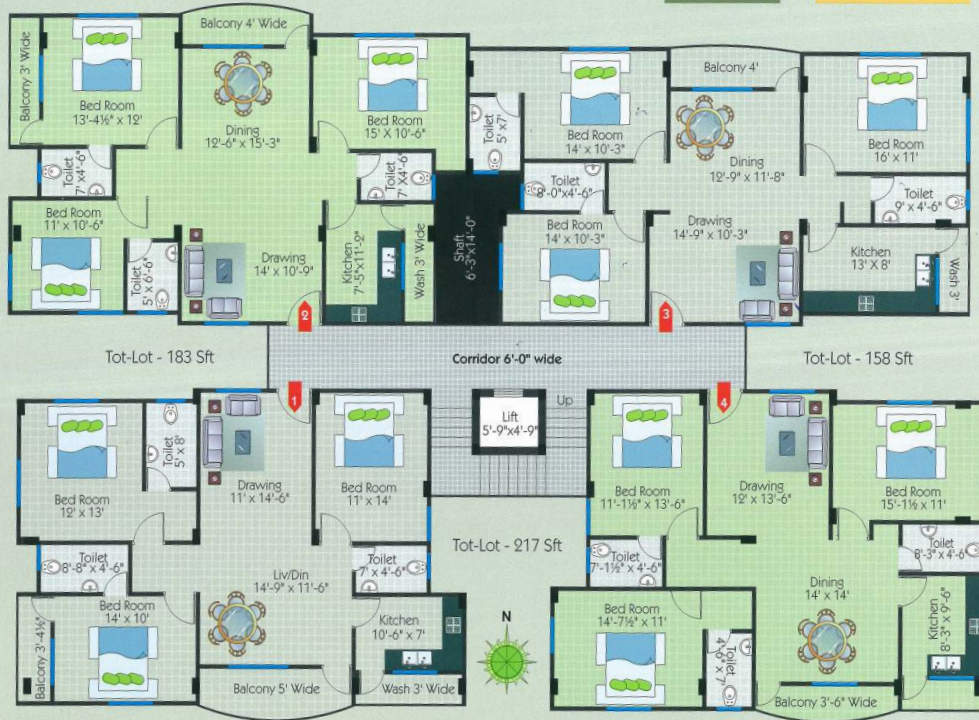
The neo-converts are not allowed to get disappointed as Desire Construction does not allow itself to become complacent. It is this admirable attitude towards quality, bordering on passionate devotion, which has allowed its numerous residential and commercial ventures to become runaway success stories.

Desire Constructions practically live the concept of 'Total Professionalism' and it is a mantra chanted by management as well as the skillful, dedicated and hardworking workforce. And this honest dedication to professionalism reflects its ethically laudable intentions, skillful execution and confident presentation of its projects.

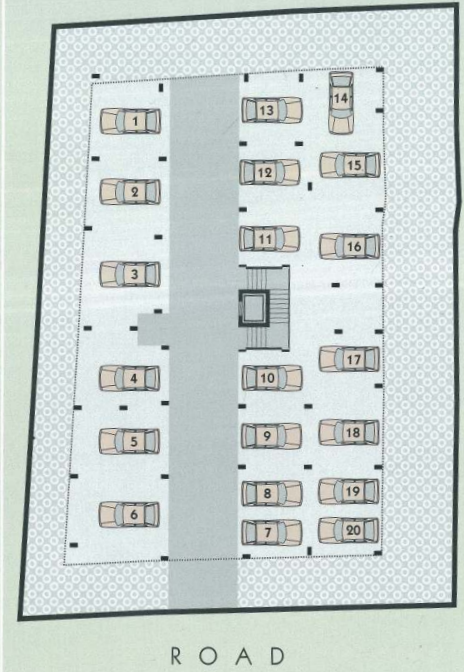


Typical Floor Plan

Flat No. 1, 2, 3 & 4 - 1500 Sq. Ft. Each



Parking Floor Plan



Approved Layout

Located in Banjara Hills Road, No.12 adjacent to CRPF.
with ample open space abreast and society's park just few blocks apart.

A beauty is judged by the grace it radiates,
intelligence it displays, honest conviction
it possesses and the confidence it states.

Desire
Elegant



- As per Vaastu Guidelines
- Beautiful Landscaping
- Well Ventilated
- High Quality Finishes
- Hardware of Reputed make

Desire's Elegant
is a concrete artwork
which uses everything
that is desirable,
practicable and
qualitatively
praiseworthy.

Specifications

FRAME WORK : Reinforced Cement Concrete.

WALLS : Light Weight Red Brick in Cement Mortar / Solid Block.

PLASTERING : Two-Coat Smooth Sponge Finish with wall Putty finish.

DOORS : Main Door-Teak Wood. Other Doors-Teak Frames and Water Proof Flush Shutters. Balcony Door with MS Grill.

WINDOWS : UPVC.

FLOORING : Vitrified Tiles 80/80cm.

KITCHEN : Black Granite Stone Platform 2'Wide and Glazed Tiles upto 3' Height above the Platform. Modular Kitchen.

WASHROOMS : Ceramic Flooring, Walls to be covered with Glazed Tiles Upto Door Height, European WCs in Main Bedroom, Other: Shower & Wash Basin with Mixers, Provision of Geysers, Standard C.P Fittings, Sanitary Fittings.

PAINTING : Birla / J.K Wall Putty Finish in all Interior Walls & Ceiling Plus Plastic Emulsion paint (Asian Paints). All Exterior Walls Sandex Mat or Ace (Asian Paints). Main Doors and Frames Touch Wood Polish. All Interior other Doors with

Vineer and Polish- Comic Patty to be provided through out the Flat.

ELECTRICAL FITTINGS :

Concealed Multi-Stand Copper Wiring with Adequate Points, Switches of ISI Mark. Modular Switches, Power Plugs for Refrigerator; Mixers/Grinders, Plug points for T.V., Provision for Cable & Internet Connection. Power Outlets for Air Conditioners in all rooms. (Wires make Finolux or Fine cab).

LIFT : One Lift for 6 Persons Capacity-KONE.

TRANSFORMER : Of ISI Mark-3 Phase-Govt. Approved.

GENERATOR : Diesel-Automatic-Make, Mahindra.

WATER SUPPLY : Municipal Tap Water Connection with Submersible Pump of Standard Quality.

COMMON AREA : Marble Flooring in Common Area and Staircase-Watchman Room & Toilet.

PARKING : Paved Parking Area.